



# PSYCHIATRIE ZENTRUM RHEINAU

Klinik für Forensische Psychiatrie  
Klinik für Psychiatrische Rehabilitation  
Wohnheim Tilia

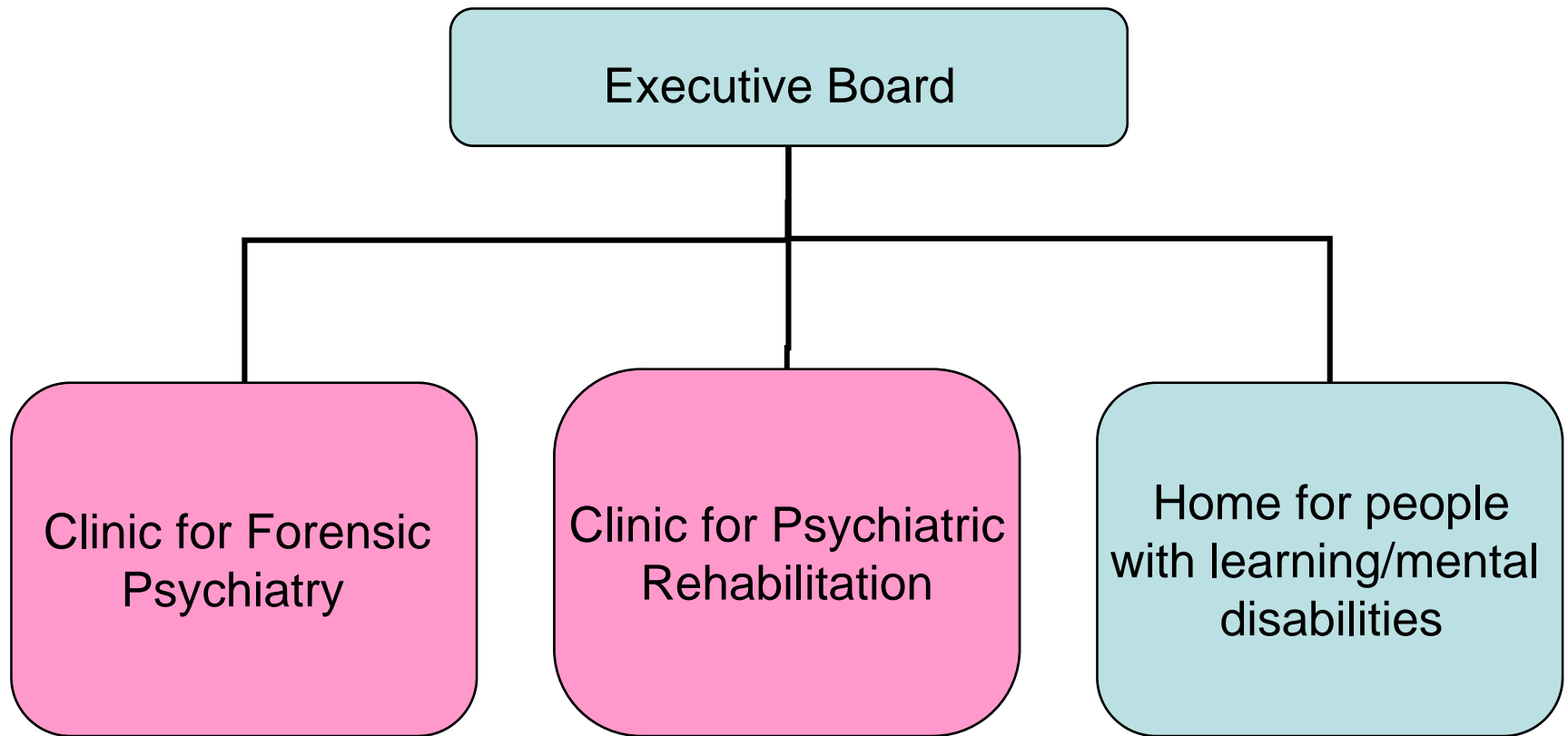
## **The implementation of a systematic nursing assessment instrument and the nursing classifications (NANDA, NOC, NIC) into the practice**

Fritz Frauenfelder MNSc,  
Clinical Nurse Specialist

# Overview

- The Center of Psychiatry Rheinau, Switzerland
- The project: „Recording the nursing Process“
  - Aims
  - Preconditions
  - Philosophy
  - assessment instrument
  - implementation of the classification

# The Center of Psychiatry Rheinau



# „Recording the Nursing Process“

## Aims:

- The quality of the care is optimized → the patient related outcomes are improved.
- The field of nursing responsibility is mapped in the electronic recording system.
- The registered nurses are able to act on a high professional level.

# „Recording the Nursing Process“

## Basic assumptions:

- Learning process: The implementation of the assessment and the classifications is a learning process for the nurses, the institution and the interdisciplinary collaboration which require time and manpower.
- Consequences: The management has to stand by the decision, and the consequences have to be well-understood by all involved.

# „Recording the Nursing Process“

## Attitude:

- The learning process occurs in daily practice.
- Learning support is flexible and geared to the individual patient.
- Improvement occurs gradually based on practice experience.
- The nurses have to be responsible for themselves (high individual responsibility)
- The nurses learn from each other

# „Recording the Nursing Process“

## The project:

Electronic documentation

Classifications

Process of problem solving

Assessment

Understanding

Nursing Concept of the Ward

# Assessment instrument

- Orientated to the Functional Health Patterns by Gordon (2007) and the PES-Format.
- The aim of our basis-Assessment instrument is to gather and structure information from the patient.
- The assessment instrument guides the nurses through the process of the decision making.

# Assessment instrument

- The gathering of the information happens within a set time-frame → assessment phase.
- The primary nurse decides on the content of the assessment instrument and the length of the assessment phase.
- The primary nurse takes on responsibility for the assessment instrument.

# Assessment instrument

## Example: Coping-Stress-Tolerance Pattern

Describes general coping pattern and effectiveness of the pattern in terms of stress tolerance. Includes the individual's reserve or capacity to resist challenge to self-integrity, modes of handling stress, family or other support systems, and perceived ability to manage stressful situations.

Unproblematic pattern

Notes:

Problematic pattern

→ see the form "Problematic Functional Health Pattern"

# Assessment instrument

## Example: “Problematic Functional Health Pattern”

Name of the patient: .....

**Pattern:** \_\_\_\_\_

➤ *Appearance:*

➤ *Causal factors / impacted factors:*

# „Recording the Nursing Process“

## The project:

Electronic documentation

Classifications

**Process of problem solving**

Assessment → Problems → Outcomes

Understanding

Nursing Concept of the Ward

# Nursing related Outcomes

- Each nursing problem has one nursing related outcome
- Each nursing related outcome has four indicators
- Each indicator has a scale from 1 - 5

# Outcomes

## Example: Nursing related Outcomes

Name of the patient: .....

**Outcomes:** \_\_\_\_\_

*1. Indicator:* .....

	1	2	5	4	5
Dates					
	●	●	●	●	●
	●	●	●	●	●
	●	●	●	●	●

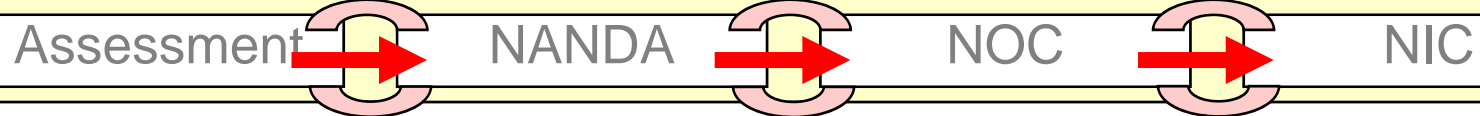
# Nursing related Outcomes

- The primary nurse takes on responsibility for the Nursing related outcomes. She or he defines the outcome, the indicators, the interval of the estimation, and the evaluation of the process.
- All registered nurses conduct estimations at the defined points in time.

# „Recording the Nursing Process“

## The project:

### Electronic documentation



### Classifications



### Process of problem solving



### Understanding

Nursing Concept of the Ward

